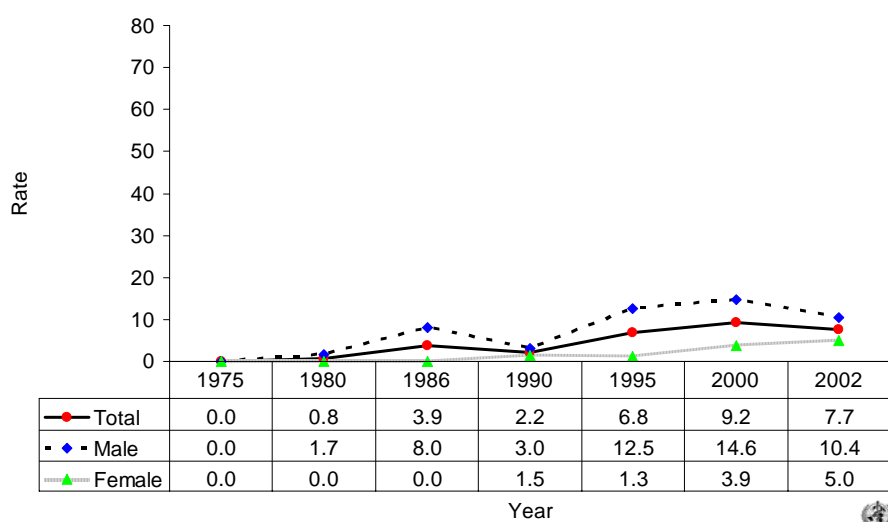
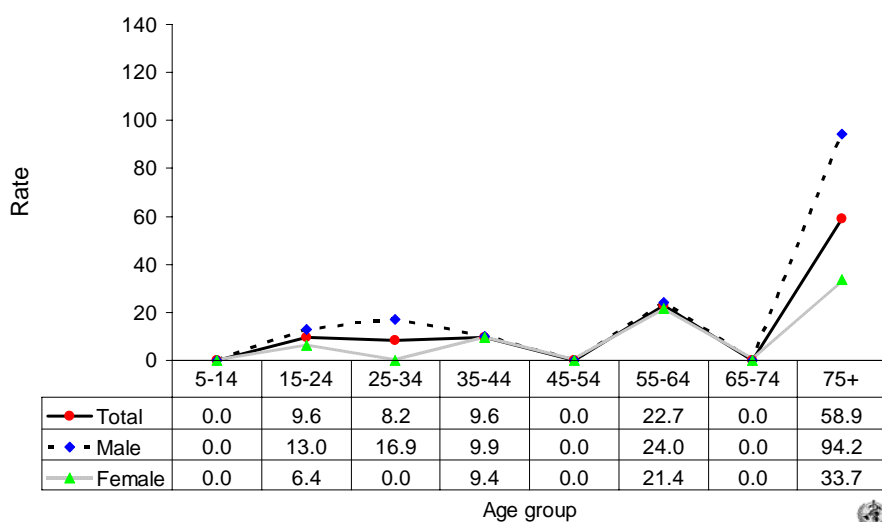


Suicide rates (per 100,000), by gender, Saint Lucia, 1975-2002.



Suicide rates (per 100,000), by gender and age, Saint Lucia, 2002.



Number of suicides by age group and gender. SAINT LUCIA, 2002.

Age (years)	5-14	15-24	25-34	35-44	45-54	55-64	65-74	75+	All
Males	0	2	2	1	0	1	0	2	8
Females	0	1	0	1	0	1	0	1	4
Total	0	3	2	2	0	2	0	3	12