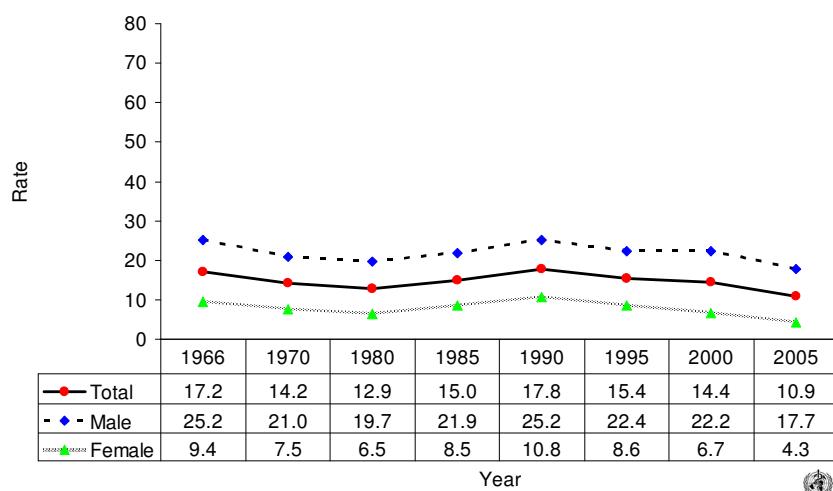
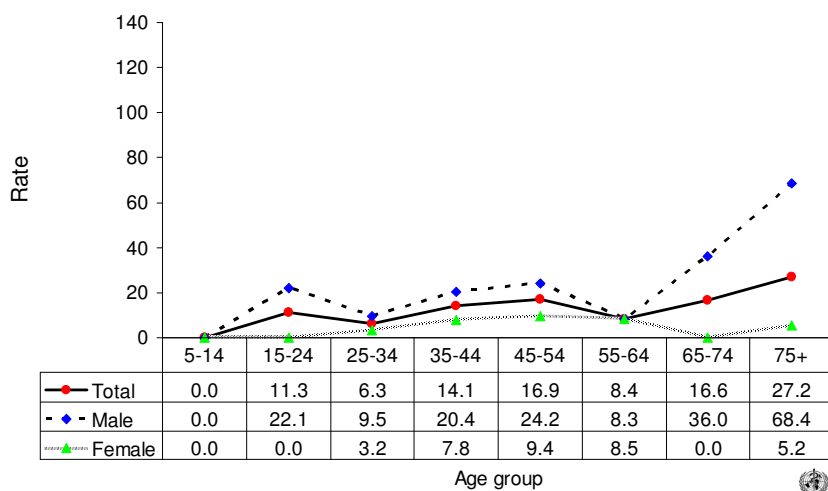


Suicide rates (per 100,000), by gender, Luxembourg, 1966-2005.



Suicide rates (per 100,000), by gender and age, Luxembourg, 2005.



Number of suicides by age group and gender. LUXEMBOURG, 2005.

Age (years)	5-14	15-24	25-34	35-44	45-54	55-64	65-74	75+	All
Males	0	6	3	8	8	2	6	7	40
Females	0	0	1	3	3	2	0	1	10
Total	0	6	4	11	11	4	6	8	50